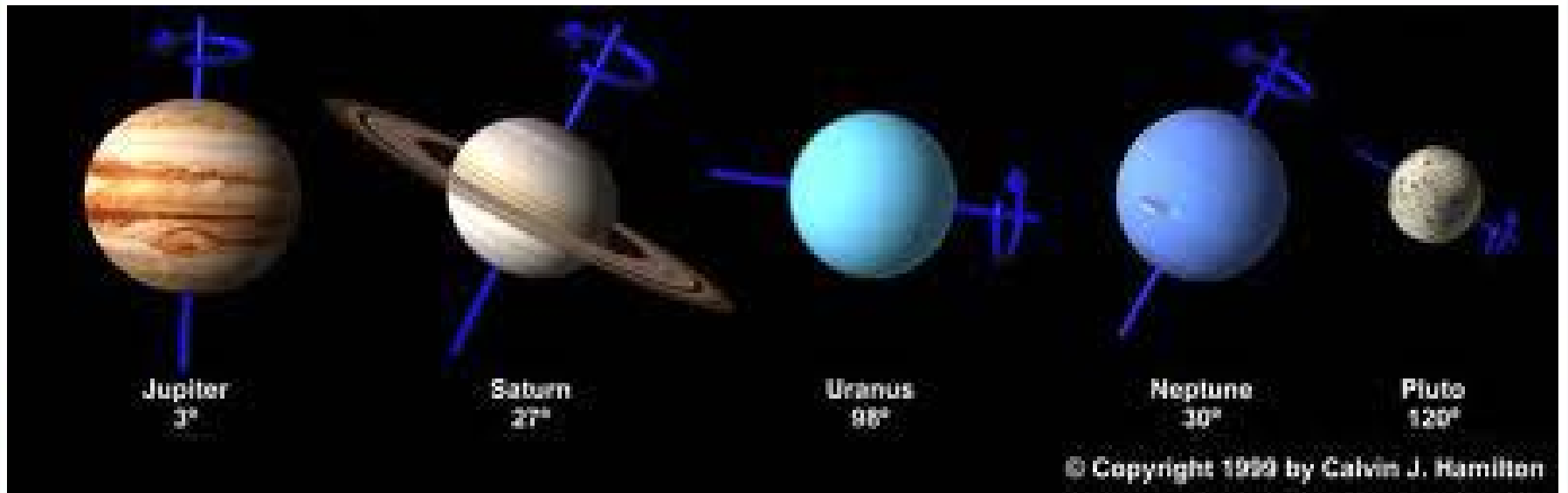




The Malefics Part 2
The Greater Malefic: Saturn

E Newberg © 2012

The Outer Planets

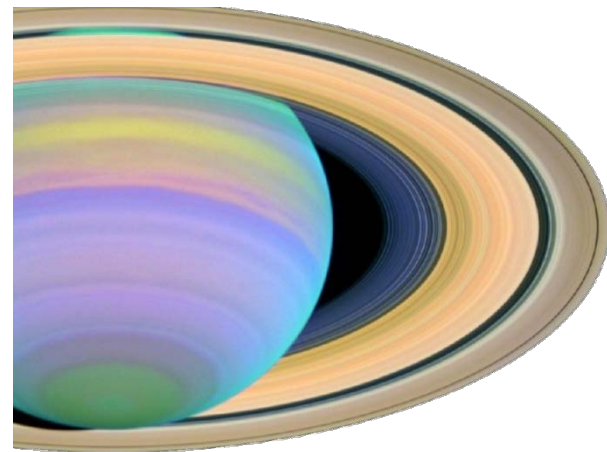


- The outer planets include all the planets past the main asteroid belt between Mars and Jupiter.
- Because of the length of their orbits, astrologers these planets as more generational.

The Outer Planets (traditional)



Planet	Movement in chart	Return to Natal Position	One orbit of the Sun
♃ Jupiter	0° - 14' a day	11.8 years	11.86 years
♄ Saturn	0° - 8' a day	29.456 years	29.459 years



If we found in Saturn a way of withdrawal from the ordinary life, we find in Jupiter entry into precisely that which is most common and ordinary. Thomas Moore (1990)

Saturn ♄

Astrological Overview



- Saturn is the last planet visible without a telescope and is the last planet used by traditional astrology.
- Saturn indicates boundaries, restriction and the giving of form. Saturn is the keeper of order and the planet of time.
- It represents depth of thought, self-discipline, perseverance, sorrow, ambition, administrators or authority, maturity, stagnation, misfortune, struggle, stress, depression, cold
- Jupiter represents justice and laws, Saturn represents judgment and the structured legal system



*Roman god Saturn
devouring his child*

Joseph Crane, “The Hellenistic Legacy”, p. 34



- Saturn when fortunate, gives *gravitas* – an austere person, one with strong opinions, single-minded or very focused, a worthy friend and a reliable guide. Even when fortunate, however, a Saturn person is vulnerable to envy, greediness and miserliness, and may suffer from being too harsh (Ptolemy says “quick to punish.”)
- When unfortunate, Saturn is much worse: withdrawn, cowardly, possibly treacherous to others, and lacking in affection. Using words I would never use with my clients, Ptolemy calls these people “sordid” and “shameless.” ... Saturn can incline us toward activities we might be ashamed of.



Joseph Crane, “The Hellenistic Legacy”, p. 34-35



- Jupiter, assisting Saturn, smoothes over Saturn’s rougher edges, bringing out more warmth and nobility;
- Mars assisting brings out more harshness and vulgarity.
- With Venus, malevolent Saturn occupies itself with interpersonal matters—disliking women, being rigid, unpleasant, or unsociable.
- Interesting, Ptolemy also contends that Saturn with Venus can make one blasphemous and impious – perhaps bringing together Saturn’s cynicism and Venus’s worldliness.



W Saturn

Rules Capricorn & Aquarius



Saturn

- There's a natural opposition between Sun and Moon and the planet of darkness – Saturn.
- The aspect of the opposition is the nature of Saturn

Ruler of
Feminine
Cardinal Earth
Capricorn

- This cold and dry planet is quite at home in cold and dry Capricorn. Saturn here maintains a consistent humorlessness and negative attitude.
- Nocturnal Saturn prefers Capricorn to Aquarius

Ruler of
Masculine Fixed
Air Aquarius

- Saturn is capable of greater flexibility [in Aquarius] than in Capricorn.
- Diurnal Saturn prefers Aquarius to Capricorn.

Famous people with Saturn in Rulership



- Capricorn
 - Jacques Derrida, Barack Obama, Lady Di, Louis XVI, Marie Antoinette, Walt Disney, Emmanuel Kant, Neil Armstrong, Buzz Aldrin, Casanova, Charles Dickens, Mikhail Gorbachev, Hirohito, Peter Jackson, John Milton
- Aquarius
 - Wolfgang Amadeus Mozart, Charles Manson, Jung, Nietzsche, Jim Carrey, Nicolas Cage, Quentin Tarantino, Calista Flockhart, Phillip Roth, Herbert Hoover, Sir Winston Churchill, George Orwell, William Blake, Alistair Crowley, Henry VIII, Gustav Holst, Yuri Gagarin, Lord Byron, Bismarck, James Cook, Horatio Nelson

Famous people with Saturn in Detriment



- Saturn in Cancer
 - William Wordsworth, William Shakespeare, Mary Shelley, Angelina Jolie, Leonardo DiCaprio, George W Bush, Napoleon Bonaparte, JFK, Jules Verne, David Beckham, Nostradamus, Marquis De Sade, Elizabeth I, Neil Young, DH Lawrence, Elgar, Dylan Thomas, Joseph Conrad
- Saturn in Leo
 - Adolf Hitler, Bill Clinton, Hillary Clinton, Jean Jacque Rousseau, Sir Arthur Conan Doyle, Steven King, Ludwig Van Beethoven, Steven Spielberg, Nelson Mandela, Mila Jovovich, David Bowie, Shakira

W Saturn

Exalted in Libra, in Fall in Aries



Exalted in
Masculine
Cardinal
Air
Libra

- Saturn's penchant for organization is useful for Libra's sense of proportion;
- Saturn in Libra can embody fairness and objectivity.
- Libra's airiness lightens Saturn's tendency toward dourness and Libra's idealism relieves some of Saturn's cynicism.
- In Aries, where Saturn is fall, Saturn loses its focus and its sense of priorities: Saturn becomes more impulsive and less careful.
- Sun is exalted in Aries and Saturn depressed. In Libra, Saturn is exalted and Sun depressed. This sets up an opposition between Sun, the planet of warmth and light and Saturn, the planet of coldness and darkness.

Joseph Crane, The Hellenistic Legacy

Famous People with Saturn in Exaltation & Fall



- Libra (in Exaltation)
 - Leonardo daVinci, Edmond Halley, Genghis Khan, Jane Austin, Oliver Cromwell, Alexis de Tocqueville, Alfred Nobel, Henry Ford, Jean Renoir, J.B. Priestley, Martha Graham, Meher Baba, Arthur Janov, Alan Sheppard, Ruby Dee, Caroline Myss, Tony Blair, John Edwards, Benazir Bhutto, Christine Aguilera, Justin Timberlake, Britney Spears, Prince William, Beyonce Knowles and Serena Williams.
- Aries (in Fall)
 - George Washington, Ulysses S. Grant, Joseph Stalin, Julia Roberts, Helen Keller, Lee Harvey Oswald, Saddam Hussein, Will Smith, Thom Yorke, George Washington, Leon Trotsky, Herman Melville, Seamus Heaney, Ian Fleming

Saturn the malefic

Liz Green (1977)



- Saturn symbolizes a psychic process as well as a quality or kind of experience. He is not merely a representative of pain, restriction, and discipline;
- He is also a symbol of the psychic process, natural to all human beings, by which an individual may utilize the experiences of pain, restriction, and discipline as a means for greater consciousness and fulfillment.
- In traditional astrology Saturn is known as a malefic planet. Even his virtues are rather dreary—self-control, tact, thrift, caution—and his vices are particularly unpleasant because they operate through the emotion we call fear.
- He has none of the glamour associated with the outer planets and none of the humanness of the personal planets.

Saturn, A New Look at an Old Devil by Liz Greene 1977 p. 10

Saturn

the Dweller at the Threshold



- By his sign and house position, Saturn denotes those areas of life in which the individual is likely to be frustrated or meet with difficulties.
- In many instances Saturn seems to correspond with painful circumstances which appear not to be connected with any weakness or flaw on the part of the person himself but which merely “happen”, thereby earning the planet the title, “Lord of Karma.”
- This rather depressive evaluation remains attached to Saturn despite a rather depressive evaluation remains attached to Saturn despite a most ancient and persistent of teachings which tells us that he is the Dweller at the Threshold, the keeper of the keys to the gate, and that it is through him alone that we may achieve eventual freedom through self-understanding.

Saturn, A New Look at an Old Devil by Liz Greene. 1977, p. 10-11

Saturn and self-discovery



- The frustrating experiences which are connected with Saturn are obviously necessary as they are educational in a practical as well as a psychological sense. Whether we use the psychological or esoteric terminology, the basic fact remains the same:
- *Human beings do not earn free will except through self-discovery, and they do not attempt self-discovery until things become so painful that they have no other choice.*
- *It is not enjoyment of pain which Saturn fosters, but rather the exhilaration of psychological freedom.*

Khronos / Chronus



- KHRONOS was the primeval god of time, a divinity who emerged self-formed at the beginning of creation in the Orphic cosmogonies.
- Khronos was imagined as an incorporeal god, serpentine in form, with three heads--that of a man, a bull, and a lion. He and his consort, serpentine Ananke (Inevitability), circled the primal world-egg in their coils and split it apart to form the ordered universe of earth, sea and sky.
- Khronos and Ananke continued to circle the cosmos after creation-their passage driving the circling of heaven and the eternal passage of time.
- **The figure of Khronos was essentially a cosmological doubling of the Titan Kronos (also "Father Time").**
- Khronos was represented in Greco-Roman mosaic as Aion, "eternity" personified.

– From <http://www.theoi.com/Protogenos/Khronos.html>



Aeon with the zodiac wheel, Imperial Roman mosaic. 3rd A.D., Musée de L'Arles Antique, Arles, France

Kronus – Greek mythology



- In Greek mythology, Kronus (or Cronus) was the leader of the 1st generation of titans. He overthrew his father Uranus (Ouranus - Sky) by using his sickle which was used to castrate him. He feared the prophecy that his own sons would overthrow him and so he swallowed each of his children as they were born. His wife, Rhea his the youngest, Zeus (Jupiter) and gave Kronus a stone to swallow instead. When he was grown, Zeus did overthrow him and release the rest of the gods.
- Many human generations later, Zeus released Kronos and his brothers from this prison, and made the old Titan king of the Elysian Islands, home of the blessed dead.
- Kronus was a cruel and tempestuous force of chaos and disorder and patron of the harvest. Yet he also ruled over a golden age.



*Cronus and Rhea,
Athenian red-figure pelike. 5th B.C.,
Metropolitan Museum of Art, New
York*

Kronos, King of the Golden Age



- Hesiod, Works and Days 109 ff (trans. Evelyn-White) (Greek epic 8th or 7th B.C.)
 - "First of all the deathless gods who dwell on Olympus made a Golden Race of mortal men who lived in the time of Kronos when he was reigning in heaven.
 - And they lived like gods without sorrow of heart, remote and free from toil and grief: miserable age rested not on them; but with legs and arms never failing they made merry with feasting beyond the reach of all evils.
 - When they died, it was as though they were overcome with sleep, and they had all good things; for the fruitful earth unforced bare them fruit abundantly and without stint."



Statute of Saturn

Kronos, King of the Golden Age



- Hesiod, Works and Days 109 ff (trans. Evelyn-White) (Greek epic 8th or 7th B.C.)
 - “They dwelt in ease and peace upon their lands with many good things, rich in flocks and loved by the blessed gods.
 - But after earth had covered this generation--they are called Pure Spirits (*daimones hagnoi*) dwelling on the earth (*epikhthonioi*), and are kindly, delivering from harm, and guardians of mortal men;
 - for they roam everywhere over the earth, clothed in mist and keep watch on judgments and cruel deeds, givers of wealth [i.e. agricultural bounty]; for this royal right also they received.”

The Golden Age



**The
Golden
Age
1605
By Joachim
Wtewael**

(Dutch,
1566–1638)
Oil on copper
8 7/8 x 12 in
Metropolitan
Museum of
Art

♄ Saturn – Roman mythology



- Over time, the mythology of the Roman agricultural god Saturnus was combined with both the Greek gods Cronus and Chronus.
- The Roman Saturn had two consorts who represented different aspects of the god. The name of his wife Ops, the Roman equivalent of the Greek Rhea, means "wealth, abundance, resources." Yet earlier he was associated with Lua ("destruction, dissolution, loosening"), a goddess who received the bloodied weapons of enemies destroyed in battle.



Roman god Saturn

Roman Saturn



- Similar to the Greek myth, after Jupiter came to power, Saturn fled to Rome and established the Golden Age of Man, bringing agriculture and civilization.
- Romans celebrated Saturn during his festival Saturnalia (at the winter solstice), where there was a feasting, the reversal of the roles of master and servant, gift-giving and the loosening of moral restrictions.

Saturn's contradictions indicate his capacity to obliterate social distinctions.

- in some myths he is identified as a foreigner within one of Rome's oldest sanctuaries
- Some myths describe him as a god of liberation who is kept in fetters most of the year

The Persian Time-god



- As far as the Persian texts are concerned, three different aspects of the Time-god must be distinguished. According to the orthodox teaching of Zarathushtra, Zervan is a creature of Ahura-Mazda, the God of Good. According to a second theory, however, there were originally two archetypes, that of Good and that of Evil.

- A separate Sassanid sect regarded Zervan Akarana, Infinite Time, as the cause and the source of all things. Ahura-Mazda and Ahriman both sprang from Zervan and were subject to him, and the followers of this cult called themselves Zervanists.

- ...Sometimes he is shown nude, though often his sex is disguised by a loin-cloth or by an enveloping snake, as if it were intended either to leave the deity's sex vague or to convey that both sexes were united in him.... In between the coils of the snake, which often winds itself, significantly, seven times round the god, are sometimes seen the signs of the zodiac.

– <http://www.farvardyn.com/mithras5.php>



Zervan Akarana
1st – 4th C AD

Representations of Saturn



- Saturn's representation is more prevalent in the Middle Ages than in Greece or Rome.
- He was usually represented as an old man, bare-headed and bald, with all the marks of infirmity in his eyes, countenance, and figure.
- In his right hand they sometimes placed a sickle or scythe; at others, a key, and a circumflexed serpent biting its tail, in his left.
- He sometimes was pictured with six wings, and feet of wool, to show how insensibly and swiftly time passes. The scythe denoted his cutting down and subverting all things, and the serpent the revolution of the year.

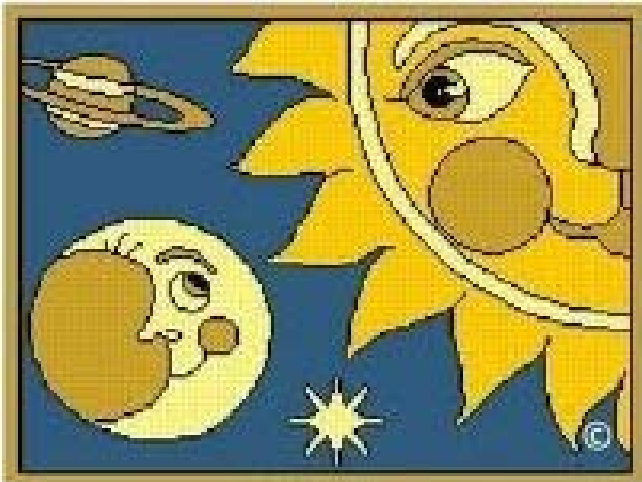


*Saturn, Aubin-Louis Millin de
Grandmaison,
Galerie Mythologique, 1811*

Interpretation Tip



- No interpretation of Saturn by sign, house, or aspect can be complete, of course, since it is necessary to synthesize these elements and align them with the combination of Sun, Moon, and Ascendant first of all, corresponding with the individual's conscious expression, his unconscious or instinctual reactions, and his behavioral patterns.



Synthesis



- These isolated factors in combination with Saturn become the spinal column of the natal chart from the point of view of character.
- They will in a very concise manner shed light on what the individual wants (the Sun), what he needs (the Moon), the style in which he goes about getting these things (the Ascendant), and the thing within the man which causes him either to fail or to be dissatisfied once he has achieved his desire (Saturn).
- This is, of course, grossly simplified



Saturn, A New Look at an Old Devil by Liz Greene 1977 p. 15

Difficult Aspects: Mars & Saturn



- Mars helps us fend for ourselves; it is assertive, confident, bold. It can be overly reckless and impulsive.
- Saturn provides restraint, discipline and structure, or it can result in frustration as it holds us back and cools the fires of Mars.
- If the combination is not used well, the result can be
 - Explosive and potentially uncontrolled rage, through either hot or icy cold anger
 - Depression that turns the Mars energy inward, against ourselves and/or down deep in the unacknowledged unconscious



"You wouldn't like me when I'm angry" - David Banner aka The Hulk

• *Green & Sasportas, 1993*

Additional Thoughts from Marsilio Ficino (1433-1499)



Thomas Moore (1990), p. 165, 166

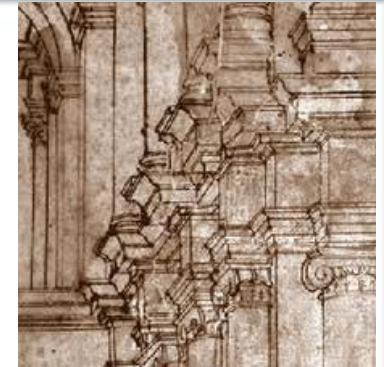
- ❑ In [Ficino's] three books on life, *De Vita Triplici*, he keeps returning to the motif of Saturnian malevolence, although it is in these books that he also brings back to life the ancient idea that within Saturn's heaviness lay the treasures of deep religious contemplation and artistic genius. ...
- ❑ Ficino is quite specific about the attitude we ought to take toward this planetary center: we must at all costs avoid his harmful influence and especially his power to desiccate the soul; on the other hand, it is only by going through Saturn, experiencing his spirit to the hilt, that we gain the positive benefit he has to offer.

Additional Thoughts 2

Thomas Moore (1990), p. 168



- ❑ True to his conservatism and dryness, Saturn lives on old and outdated fantasies, which, since they have no inherent signs of vitality, he must bolster, patch, and defend.
- ❑ So Saturnian souls, like those of carpenters who are his children in the ancient woodcuts, are quite involved in construction: ordering, collecting, analyzing, planning.
- ❑ Could this be a fantasy behind the binding fascination people have with collections of bottles, stamps, classical automobiles and just about everything else that can be brought together?
- ❑ For the individual, internal work is similar: an attempt to build on archaic materials and to survive without life-giving moisture. The turn inward in melancholy is a move to a distant place within, to the cemetery of the soul.



Additional Thoughts 3

Thomas Moore (1990), p. 173-174



- ❑ Saturn weakens energy and enthusiasm for the common life in order to highlight the extraordinary, the very depths of the soul.
- ❑ When the power of ordinary living to provide a sense of meaning and vitality fails, feelings of sadness and temptations toward withdrawal invade consciousness. This is a natural move ... for that sadness may be a call for deeper roots...
- ❑ In one sense at least it may be a Saturnian situation, religion at its deepest in Ficino's view, because we finally confront ... the infinite potential of the ordinary and personal, and search out something transcendent.

Resources



- Abū Rayḥān al-Bīrūnī (973-1048), *Understanding Astrology*
- Green, Liz. *Saturn, A New Look at an Old Devil* (1977) Samuel Weiser, NY.
- Gryphon Astrology <http://www.gryphonastrology.com/cosmology.html>
- Hamaker-Zondag, Karen. *Astro-Psychology*. The Aquarian Press. 19980.
- Hand, Robert, *Horoscope Symbols* (1981)
- Ibn Ezra, trans. Epstein, *The Beginning of Wisdom* (1147-1148)
- Farvardyn: An illustrated Reference Portal about Ancient Persia. <http://www.farvardyn.com/>
- Thoi Greek Mythology at <http://www.theoi.com/>